

The advantages of incorporating a Sealux Seal when waterproofing walls over trays & baths

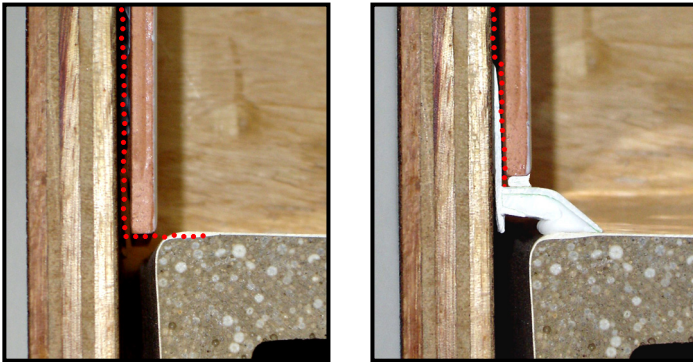
Today's hi-performance hi-use showers make waterproofing walls over shower trays and baths more a necessity than a luxury. So, what technical issues arise when connecting a wall membrane onto a shower tray or bath ledge? Can performance be increased while simplifying the installation? Sealux addresses potential problems that often arise.

1) Bridging wall / ledge gaps

Gaps often exist between the shower tray or bath ledge and adjacent walls. These gaps are often caused by:

- The rolled edge of a bath
- The splayed sides of a shower tray
- Enclosure walls not built square, parallel or to right dims.
- Poorly installed shower trays and baths

Problem: The membrane (red dotted line below) bonded to the ledge extends out beyond the outer face of the tile.

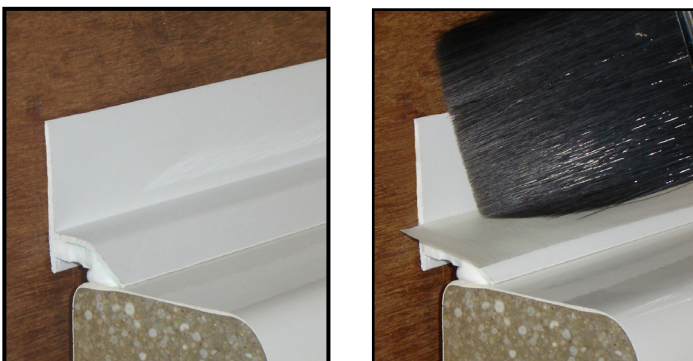


Solution: The installation of Sealux Reg 20 can bridge wall/ledge gaps up to 12mm. This makes waterproofing possible over all shower trays and baths.

2) Less effort means more installations

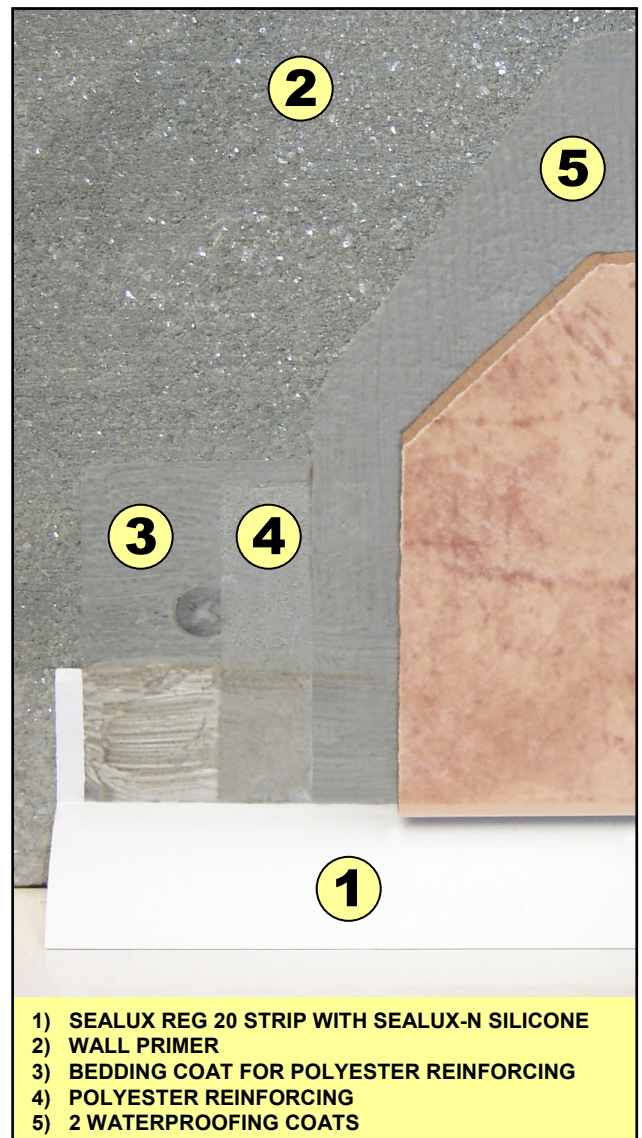
Very often, *ease'n'speed* of installation influences what products tilers recommend and install.

Problem: Bonding waterproofing membranes accurately onto the ledge can be an awkward precision task in a confined space that discourages installers because it absorbs time.



Solution: This task is made *easier and quicker* by first installing a Sealux Reg 20 profile over the joint, masking the strip and dressing the membrane down over the up-stand.

Technical Details



The benefits

The principal benefits of installing the Sealux sealing system when waterproofing shower walls are that it:

- removes transition wall/ledge 'gap' problems
- eases and speeds up the installation process
- eliminates *exposed* sealant & improves aesthetics
- eliminates seal maintenance & prolongs durability

Sealux UK 08708 760121 IRE 01 2989121

info@sealux.com www.sealux.com

For more information on waterproofing showers:
www.waterproofingshowers.com